

# Data Sheet for Precision Potentiometer

Singleturn Wirewound Potentiometer

Series RPS45



The RPS45 potentiometers with servo flange housings are for applications where a precise wirewound potentiometer with high electrically effective rotation angle is required.

- Accurate wirewound potentiometer
- Very high electrically effective angle of rotation  $355^\circ \pm 3^\circ$
- On request with mech. end stop ( $330^\circ$ )
- Multi-ganged up to 7 gangs
- With many options

## Electrical Data

Effective electrical angle of rotation 1.)	$355^\circ \pm 3^\circ$
Total resistance 1.)	10 Ohm..50 kOhm
Resistance tolerance	$\pm 3\%$ ( $\pm 1\%$ )
Independent linearity (best straight line) 1.)	$\pm 0,3\%$ ( $\pm 0,1\%$ ) ( $\pm 0,2\%$ $R \leq 2kOhm$ / $\pm 0,1\%$ $R > 2kOhm$ )
Theoretical resolution 1.)	Depends on resistance value (see table below)
Backlash (Hysteresis) 1.)	$\leq 0,5^\circ$
Rotational noise (ENR) 1.) (Method C)	100 Ohm
Max. / recommended wiper current 1.)	35 mA / 2 $\mu$ A
Power rating @ 70°C (0W @ 105°C)	1 W
Insulation Voltage 1.)	1000 VAC, 1min
Insulation Resistance 1.)	1000 MOhm @ 1000 VDC

## Mechanical Data, Environmental Conditions, Miscellaneous

Mechanical angle of rotation	$360^\circ$ without stop
Lifetime (90% el. eff. angle half sine) 2.)	1 Mio. rotations
Max. operational speed	40 rev. / min.
Bearing	2 x ball bearing
Operational torque @ ambient temperature 1.) 2.)	4 Nmm
Operating temperature range	-20..+105°C
Storage temperature range	-55..+105°C
Protection grade (IEC 60529)	IP40
Vibration (IEC 68-2-6, Test Fc)	15g 10..2000Hz x 12h
Shock (IEC 68-2-27, Test Ea)	49g @ 11 ms x 18
Housing diameter	41 mm
Housing depth	18 mm
Shaft diameter	6 mm
Shaft type	Solid shaft

# Data Sheet for Precision Potentiometer

Singleturn Wirewound Potentiometer

Series RPS45

## Mechanical Data, Environmental Conditions, Miscellaneous

Max. radial load	≤1 N
Max. axial load	≤1 N
Connection type	Gold plated soldering lugs
Connection position	Radial
Sensor mounting	Servo flange
Mass	55 g
Fastening parts included in delivery	3 x servo clamps SFN1
Material shaft	Stainless steel
Material housing	Metal

1.) According IEC 60393

2.) Determined by climatic conditions according to IEC 68-1, para. 5.3.1 without load collectives

Please note: Max. permissible supply voltage <75 VDC respectively <50 VAC in addition the max. power rating must be observed

## Number of wire turns / resolution

Resistance value Ohm	10	20	50	100	200	500	1k	2k	5k	10k	20k	50k
Number of wire turns	450	550	450	570	720	950	820	1040	1430	1790	2280	3100

Resolution in degree E.g. R5k =  $360^\circ / 1430 = 0,252^\circ$  per winding resistive wire

# Data Sheet for Precision Potentiometer

Singleturn Wirewound Potentiometer

Series RPS45

Order code									
Description									
Selection: standard=black/bold, possible options=grey/cursive									
Series	RPS45								
<b>Resistance value / Option Tandem:</b>									
Option 10 Ohm		R10	/10						
Option 20 Ohm		R20	/20						
Option 50 Ohm		R50	/50						
Option 100 Ohm		R100	/100						
Option 200 Ohm		R200	/200						
Option 500 Ohm		R500	/500						
<b>1 kOhm</b>		<b>R1k</b>	<b>/1K</b>						
Option 2 kOhm		R2k	/2K						
<b>5 kOhm</b>		<b>R5k</b>	<b>/5K</b>						
<b>10 kOhm</b>		<b>R10k</b>	<b>/10k</b>						
Option 20 kOhm		R20K	/20k						
Option 50 kOhm		R50k	/50k						
<b>Option rear shaft:</b>									
Standard Ø6,00 x 15 mm									
Shaft length in mm									
Shaft diameter in mm (≤6 mm)									
					RA				
					RAxx,xx				
					RADMx,xx				
<b>Resistance tolerance:</b>									
<b>±3%</b>									
Option ±1%									
						W3%			
						W1%			
<b>Independent linearity:</b>									
<b>±0,30%</b>									
Option ±0,2% R ≤ 2kOhm									
Option ±0,1% R > 2kOhm									
							L0,3%		
							L0,2%		
							L0,1%		
Option center tap:									
								CT	
<b>Front shaft:</b>									
<b>Standard Ø6,00 x 31,5 mm</b>									
Option front shaft diameter Ø6,35 mm									
Option shaft length in mm									
Option shaft diameter in mm (≤6,35 mm)									
								-	
								DM6,35	
								Ax,xx	
								DMx,xx	
Option screwdriver slot:									
									B

\*Housing length +12 mm

**For higher quantities or on-going demand, additional options are available as described below on request**

For Example: Multi ganged potentiometers (max. 7) / housing length + 12 mm per gang, more center taps max. 5, with mech. end stop 330° @ 90 Ncm, special electrical and mechanical angles of rotation, and special resistance and linearity tolerances. Furthermore we can mount gear wheels or attach cable assemblies with or without connectors and much more.

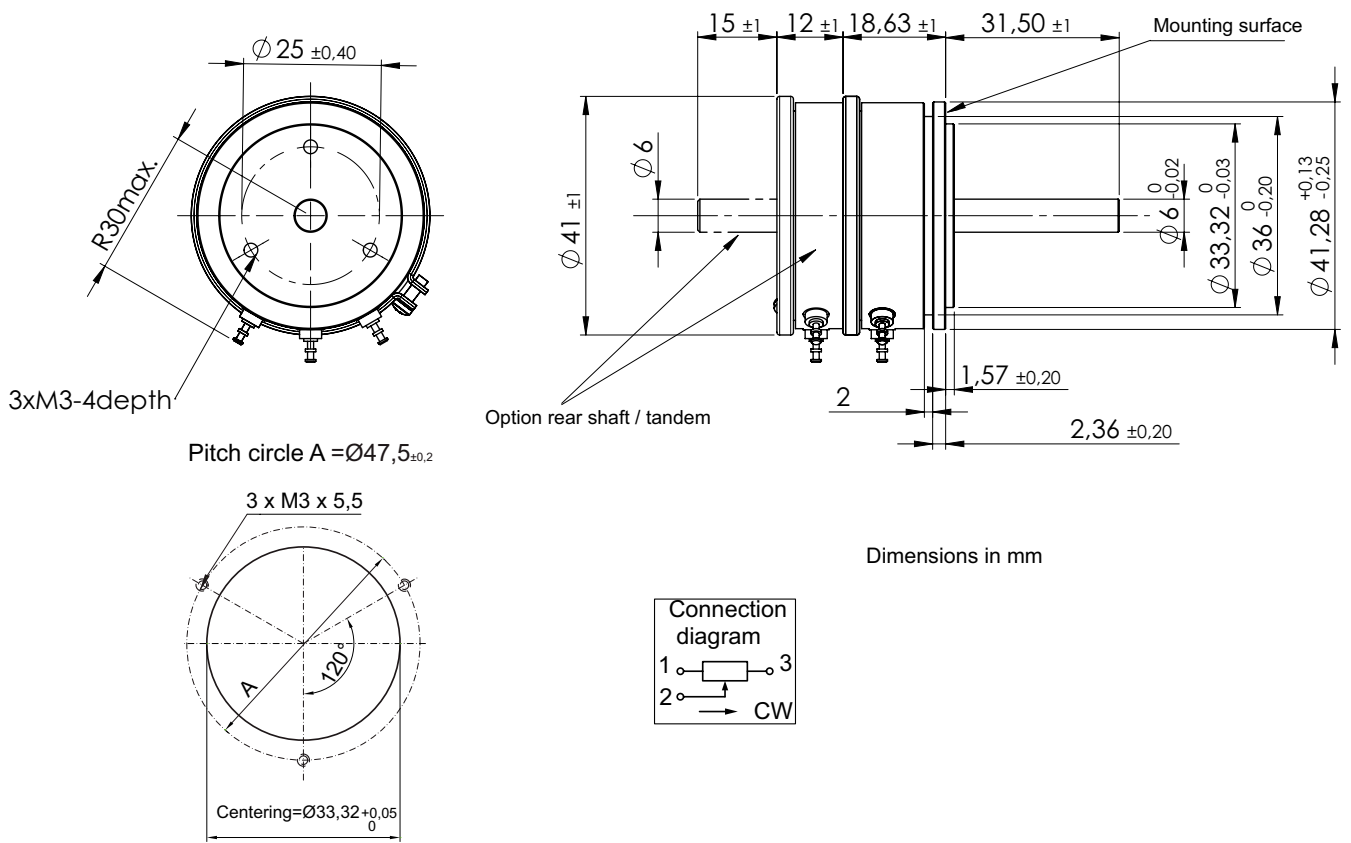
# Data Sheet for Precision Potentiometer



Singleturn Wirewound Potentiometer

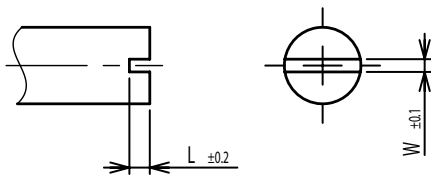
Series RPS45

## Drawing

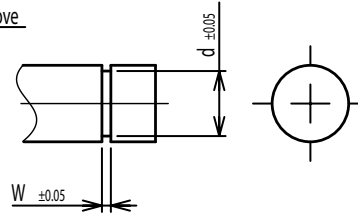


### On Request: Special machining on shaft

Slot



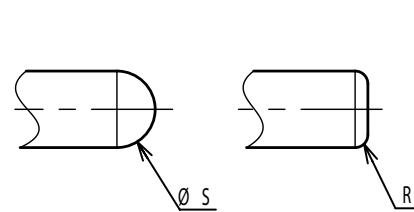
Groove



Flat



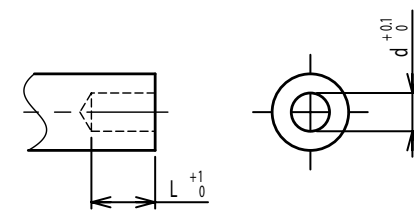
Round top



Double side flat



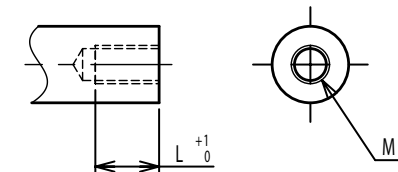
Counterbore hole



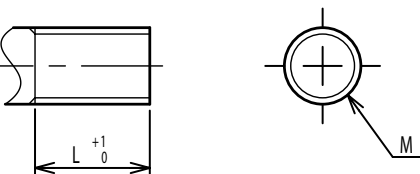
Step



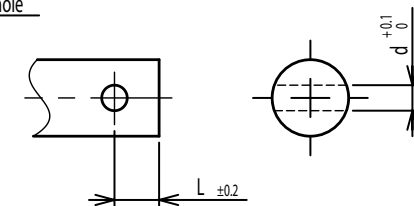
Counterbore screw hole



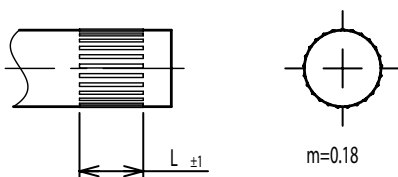
Screw Thread



Pin hole



Knurled(Parallel)



Screw thread inside hole

