

Data Sheet for Precision Potentiometer

Multiturn Wirewound Potentiometer

Series HS17



The HS17 potentiometers in 22 mm housing are suitable for applications where a precise and economical multiturn potentiometer with servo flange is important.

- Optional version HS17xxR with integrated slipping clutch
- With many options

Electrical Data	3-turn	5-turn	10-turn
Effective electrical angle of rotation 1.)	1080° ±5°	1800° ±5°	3600° ±5°
Total resistance 1.)	100 Ohm..10 kOhm	100 Ohm..50 kOhm	100 Ohm..100 kOhm
Resistance tolerance	±3% (±1%)		
Independent linearity (best straight line) 1.)	±0,25%		±0,25% (±0,1%)
Theoretical resolution	Depends on resistance value (see table below)		
Backlash (Hysteresis) 1.)	≤ 2°		
Rotational noise (ENR) 1.) (Method C)	100 Ohm		
Max. / recommended wiper current 1.)	35 mA / 2 µA		
Power rating @ 70°C (0W @ 105°C)	0,5 W	1 W	2 W
Insulation Voltage 1.)	1000 VAC, 1min		
Insulation Resistance 1.)	1000 MOhm @ 500 VDC		

Mechanical Data, Environmental Conditions, Miscellaneous	3-turn	5-turn	10-turn
Mechanical angle of rotation	1080° +10°	1800° +10°	3600° +10°
Lifetime (90% el. eff. angle half sine) 2.)	300.000 rotations	500.000 rotations	1 Mio. rotations
Max. operational speed	40 rev. / min.		
Bearing	Ball bearing front, sintered bearing rear side		
Operational torque @ ambient temperature 1.) 2.)	5 Nmm		
End stop torque 1.) 2.)	35 Ncm		
Operating temperature range	-20..+105°C		
Storage temperature range	-55..+105°C		
Protection grade (IEC 60529)	IP40		
Vibration (IEC 68-2-6, Test Fc)	15g 10..2000Hz x 12h		
Shock (IEC 68-2-27, Test Ea)	49g bei 11 ms x 18		
Housing diameter	22 mm		
Housing depth	22 mm		
Shaft diameter	3,175 mm		
Shaft type	Solid shaft		

Data Sheet for Precision Potentiometer

Multiturn Wirewound Potentiometer

Series HS17

Mechanical Data, Environmental Conditions, Miscellaneous	3-turn	5-turn	10-turn
Max. radial load		≤1 N	
Max. axial load		≤1 N	
Connection type	Gold plated soldering lugs		
Connection position	Radial		
Sensor mounting	Servo flange		
Mass	30 g		
Fastening parts included in delivery	3 x servo clamps SFN2 with screw M3 x 7,5		
Material shaft	Stainless steel		
Material housing	Plastic		

1.) According IEC 60393

2.) Determined by climatic conditions according to IEC 68-1, para. 5.3.1 without load collectives

Please note: Max. permissible supply voltage <75 VDC respectively <50 VAC in addition the max. power rating must be observed

Number of wire turns / resolution										
Resistance value Ohm	100	200	500	1k	2k	5k	10k	20k	50k	100k
Number of wire turns (HS1703)	820	920	1270	1350	1270	1990	2570	-	-	-
Number of wire turns (HS1705)	1240	1560	2000	2510	2400	3200	3900	4800	5500	-
Number of wire turns (HS1710)	2100	2480	3300	4000	5020	5000	6400	7800	10100	11000

Resolution in degree E.g. R5k 5-turn = $1800^\circ / 3200 = 0,563^\circ$ per winding resistive wire

Data Sheet for Precision Potentiometer

Multiturn Wirewound Potentiometer

Series HS17

Order code									
Description									
Selection: standard=black/bold, possible options=grey/cursive									
Series	HS17								
Revolutions with stop:									
Option 3-turn		03							
Option 5-turn		05							
10-turn		10							
Slipping clutch:									
Without additional mechanics									
Option with integrated slipping clutch			-						
			R						
Resistance value / Option tandem:									
Option 100 Ohm				R100	Tandem	/100			
Option 200 Ohm				R200		/200			
Option 500 Ohm				R500		/500			
1 kOhm				R1k		/1k			
Option 2 kOhm				R2k		/2k			
5 kOhm				R5k		/5K			
10 kOhm				R10k		/10K			
Option 20 kOhm (only 5 + 10 Turn)				R20K		/20K			
Option 50 kOhm (only 5 + 10 Turn)				R50K		/50k			
Option 100 kOhm (only 10 Turn)				R100K		/100k			
Resistance tolerance:									
±3%							W3%		
Option ±1%							W1%		
Independent linearity:									
±0,25% (3 to 10-turn)								L0,25%	
Option ±0,10% (10-turn) R ≥ 5kOhm								L0,1%	
Option center tap only 10 turn:									CT
Front shaft:									
Standard Ø3,175 x 9,6 mm									
Option shaft length in mm									-
Option shaft diameter in mm (≤6,35 mm)									Ax,xx DMx,xx

For higher quantities or on-going demand, additional options are available as described below on request

For Example: Special electrical and mechanical angles of rotation, and special resistance and linearity tolerances. Furthermore we can mount gear wheels or attach cable assemblies with or without connectors and much more.

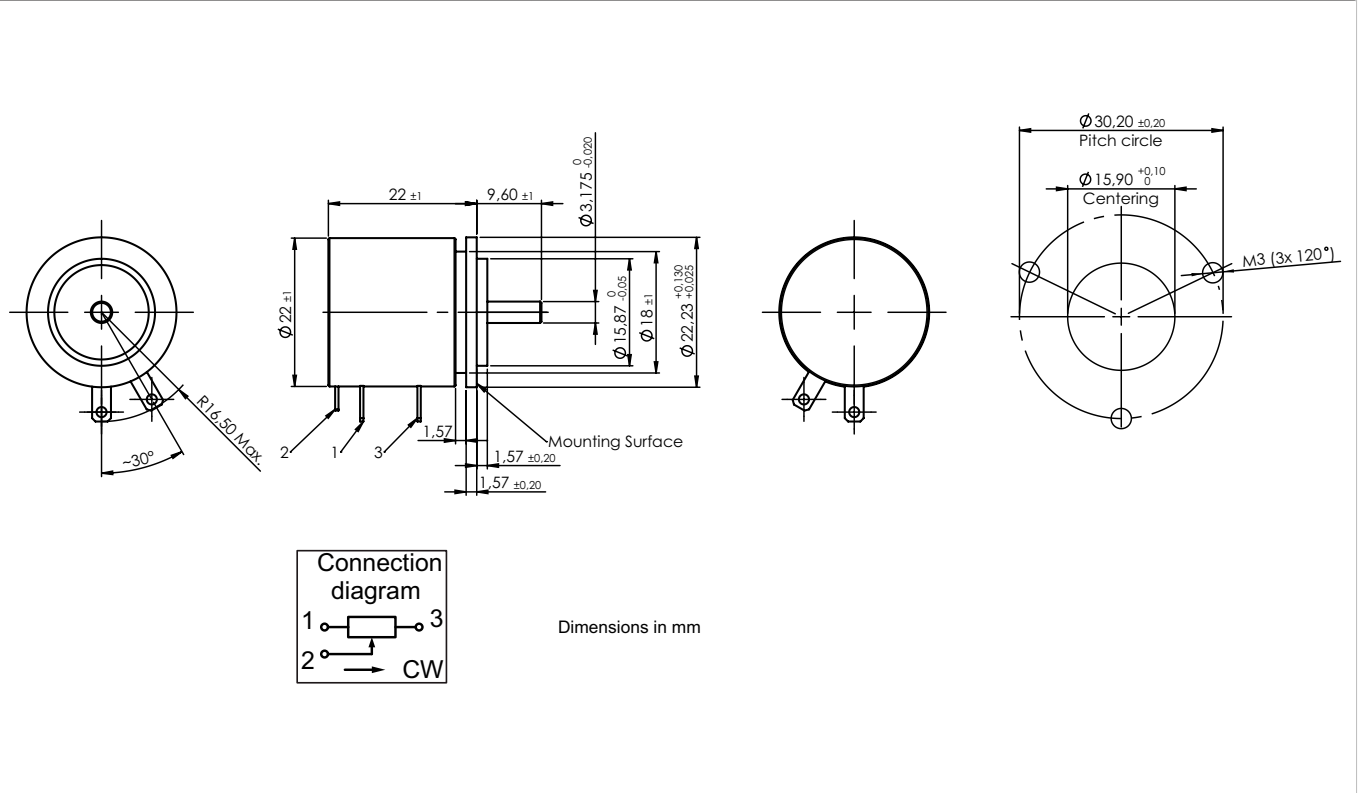
Data Sheet for Precision Potentiometer



Multiturn Wirewound Potentiometer

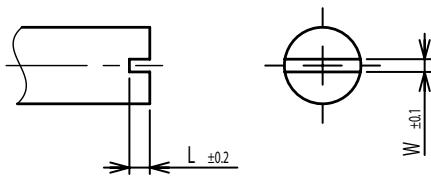
Series HS17

Drawing

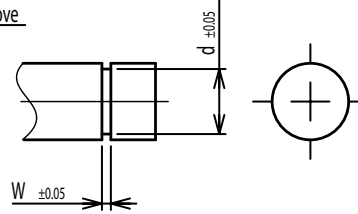


On Request: Special machining on shaft

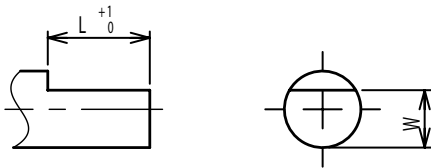
Slot



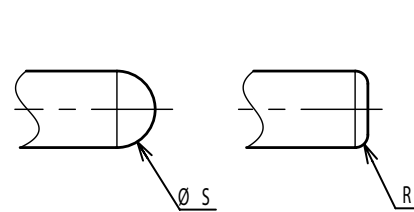
Groove



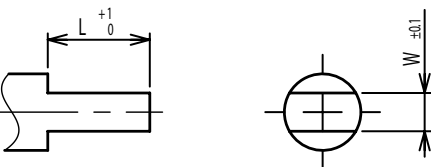
Flat



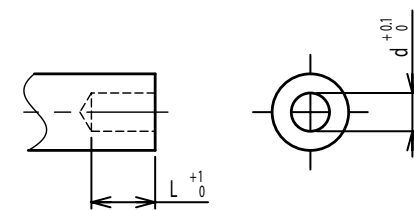
Round top



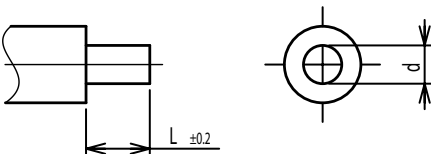
Double side flat



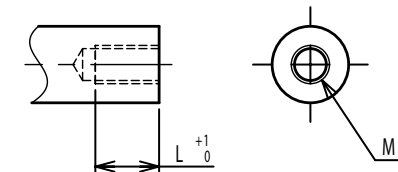
Counterbore hole



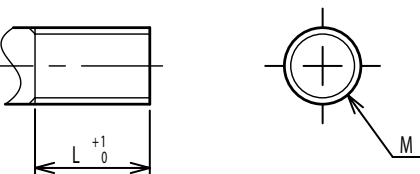
Step



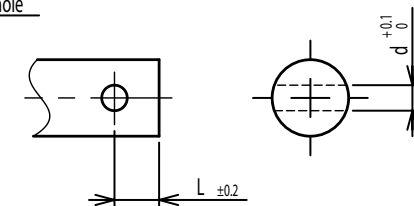
Counterbore screw hole



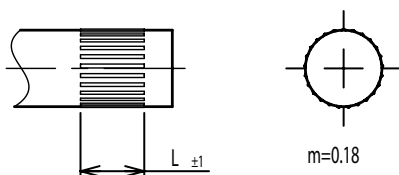
Screw Thread



Pin hole



Knurled(Parallel)



Screw thread inside hole

